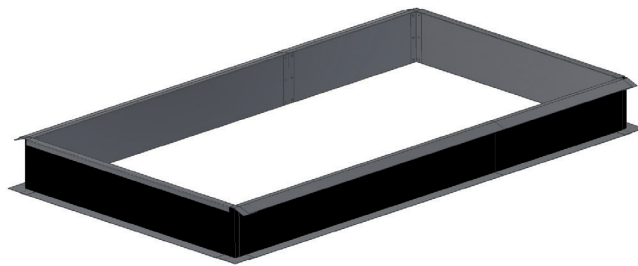


Notice technique de montage costière de voûte

Technical instructions for the installation of the vault's upstand

Tetravoûte / Tetravoûte Therm
Tetravoûte / Tetravoûte Therm

Fourniture Tolplex
Provided by Tolplex



30		31		57		<p>Vis auto-perçantes 6,3 X 19 mm Self-tapping screws 6,3 X 19 mm</p>
	<p>Flancs de tympan Tympanum side of the upstand</p>		<p>Flancs de longpan Longside of the upstand</p>			

Outillage à prévoir
Tools to be provided



Visseuse
Drill machine

+



Embout de 10 mm
Socket 10 mm

Ou
Or

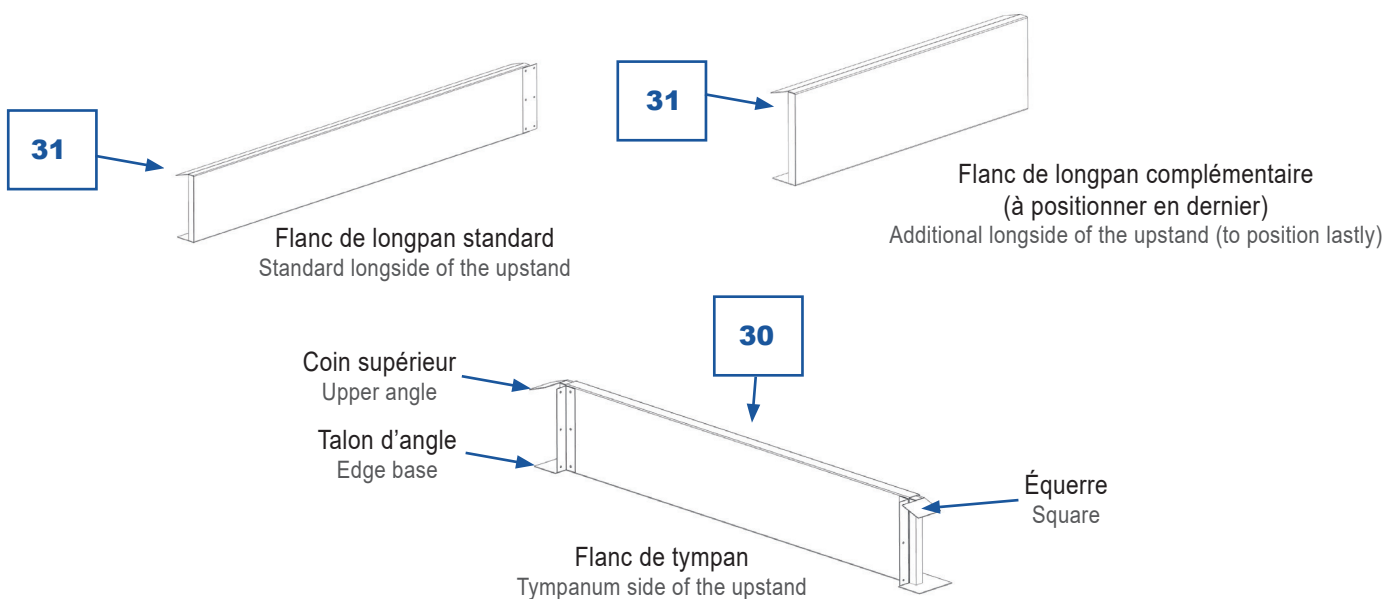
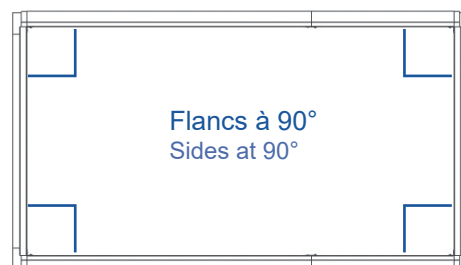


Clé à pipe de 10 mm
10 mm diameter box spanner

Montage des flancs
Mounting of the sides

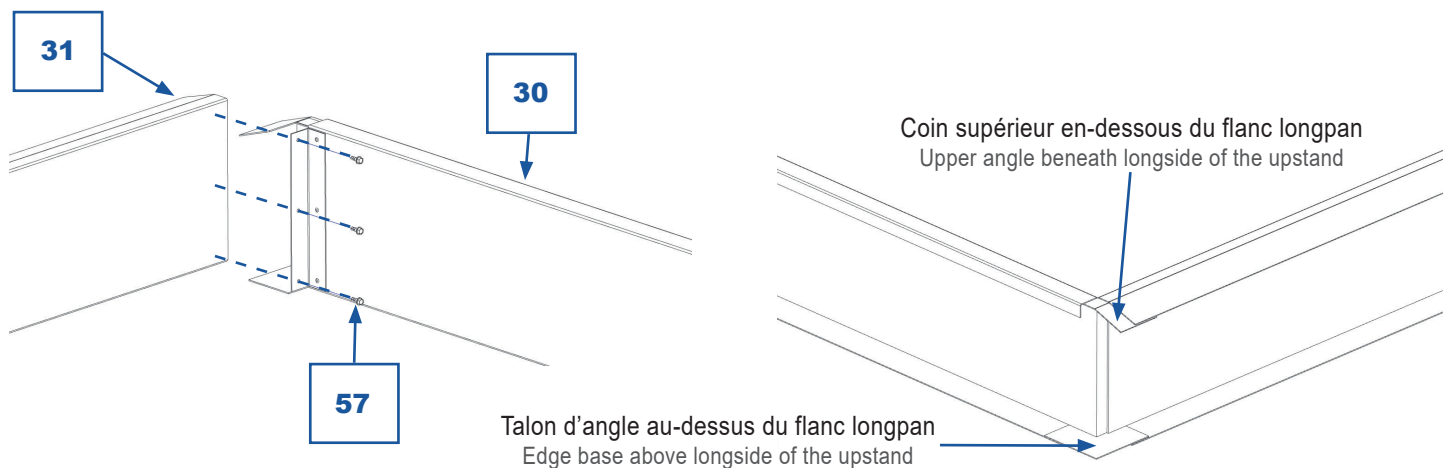


Pendant le montage, veiller à ce que les flancs soient perpendiculaires entre eux avant de les fixer.
During the assembly, make sure that the sides are perpendicular to each other before fixing them.



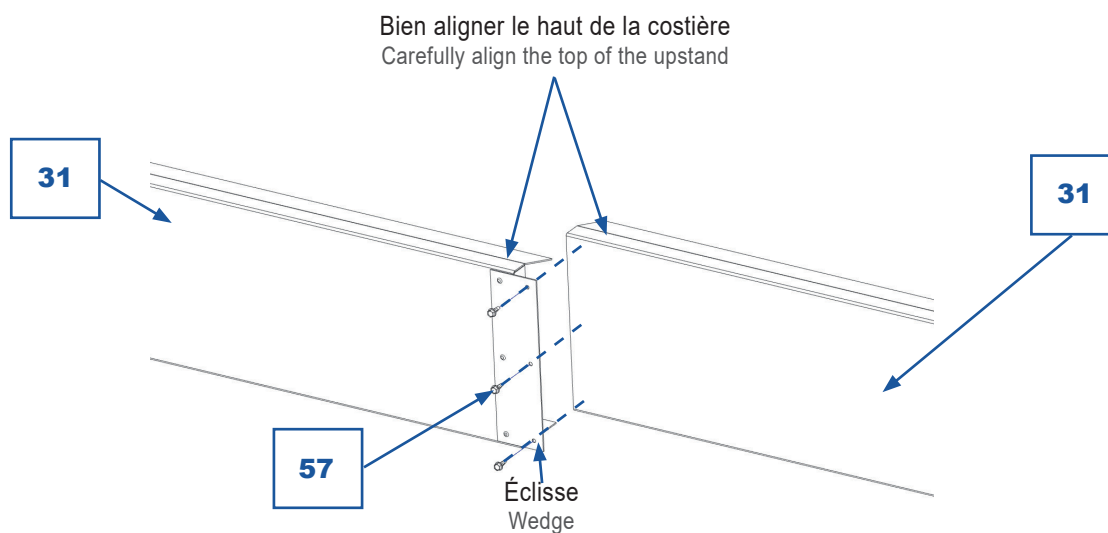
Montage des flancs longpan sur les flancs tympan

Mounting of the longside on the tympanum sides of the upstand



Montage de 2 flancs de costière longpan

Mounting of 2 longside of the upstand



Assemblage final

Final assembly

